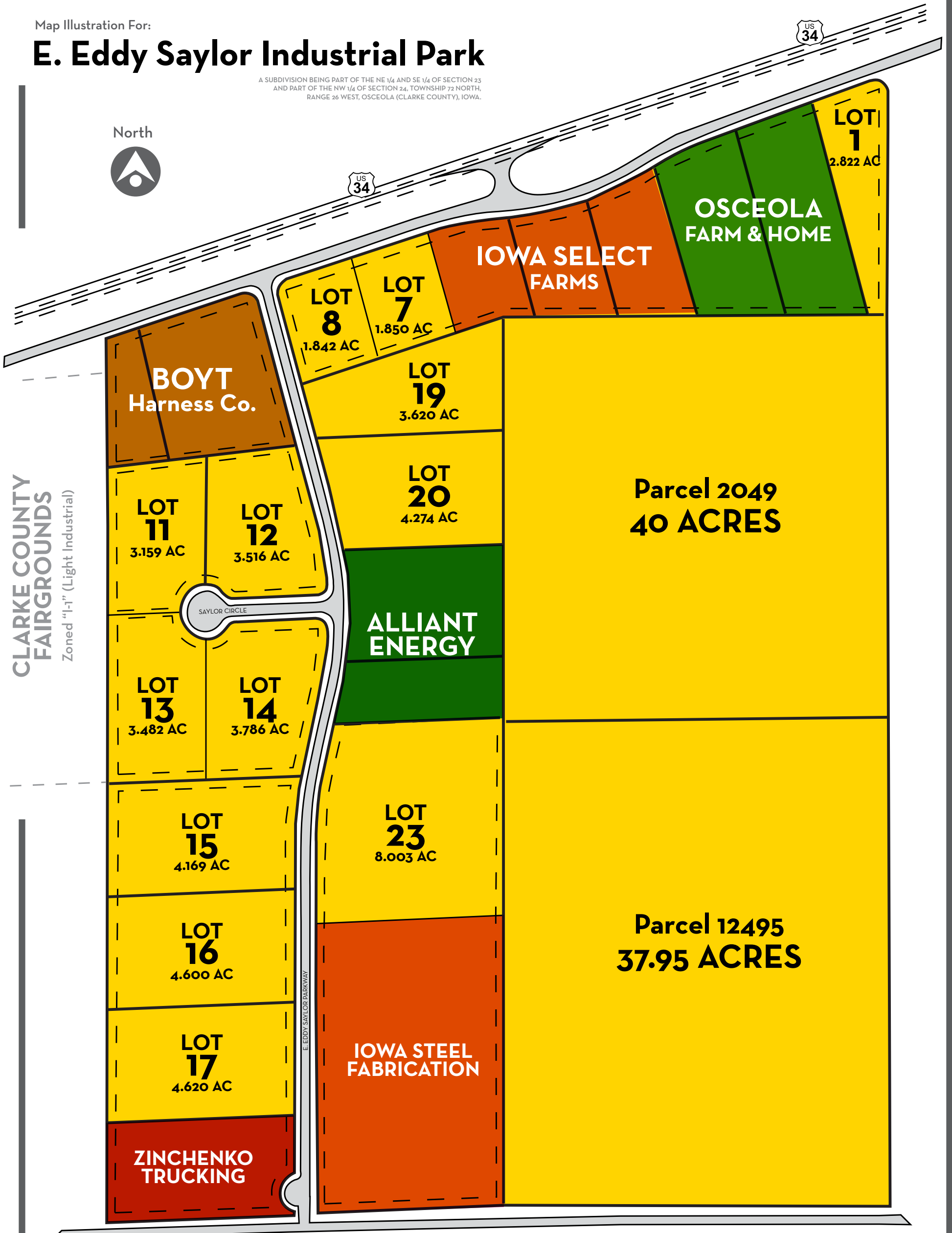


Map Illustration For:

E. Eddy Saylor Industrial Park

A SUBDIVISION BEING PART OF THE NE 1/4 AND SE 1/4 OF SECTION 23 AND PART OF THE NW 1/4 OF SECTION 24, TOWNSHIP 72 NORTH, RANGE 26 WEST, OSCEOLA (CLARKE COUNTY), IOWA.

North



For additional information, contact:
Clarke County Development Corporation

info@ClarkeCountyIowa.com
or: info@osceolaclarkedev.com
http://OsceolaClarkeDev.com